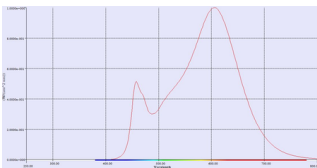




DOMELED ES111

25°, 3000K, 9W

The non-dimmable LED high-voltage reflector bulb is perfect to replace high-voltage halogen lamps with a GU10 (ES111) socket. This non-dimmable LED lamp is ideal for general lighting requirements. LED spots produce a warm light beam comparable with halogen bulbs and are ideal for use as accent lighting. LED bulbs are compatible with most existing lights with a GU10 socket and have been developed specially as replacements for halogen bulbs. LED lamps give you significant energy savings and are associated with significantly lower maintenance costs. The product is rated EEC A. The adjusted usage is 9 kWh / 1000 h.



TECHNICAL DATA

Item no.:	550382
Socket	GU10
Lamp type	LED ES111
Nominal voltage	100-240V ~50/60Hz V
Height	7.8 cm
Diameter	11.0 cm
Net weight	0.275 kg
Gross weight	0.412 kg
IP Code	IP 20
Energy efficiency index	A
Weighted energy consumption	9 kWh/1000h
Electrical power factor	0,87
Wattage	9.0 W
Lumen	420 lm
Lumen	70 lm
Colour temperature	3000 Kelvin
Beam angle	25 °
CRI	>80
Service life	25000 h
Switching cycles	25000
Start-up time	1 s



Notes
